



JOINT-RULER TOFFOLO



THE BEST
SOLUTION
FOR SLABS &
PAVEMENTS

Millions of meters
of joints treated

30 years
experience



1st price :
Pyramide d'Or
(BATIMAT - FRANCE)



Certified with the CSTB.
Technical advice 1/03-795



1st price :
Most Innovative Product
(WORLD OF CONCRETE - USA)

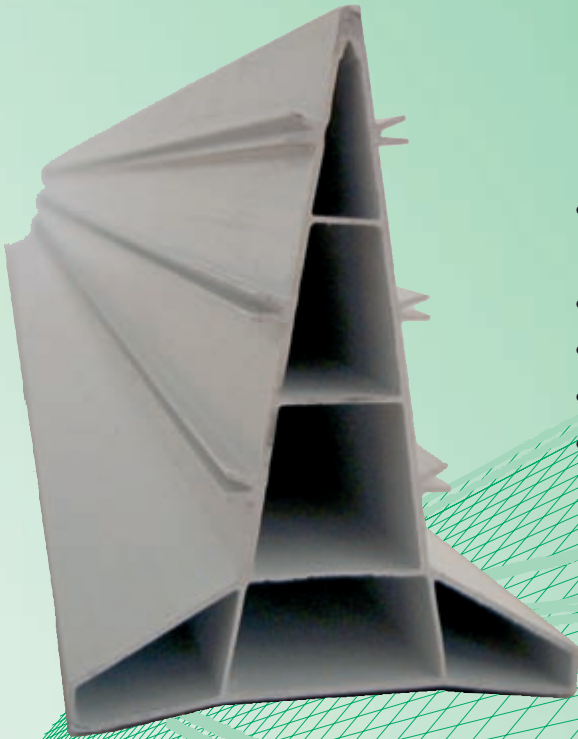



TOFFOLO

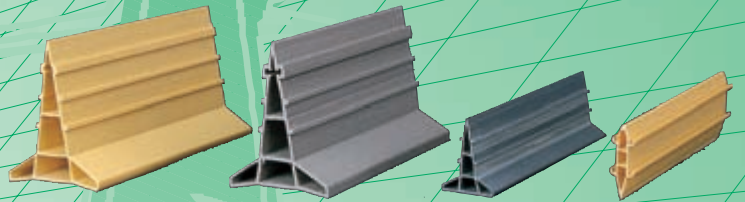
**PRODUITS
du BÂTIMENT**

TOFFOLO MATÉRIAUX - FRANCE
Tél. +33 (0)5 59 93 26 55 - Fax +33 (0)5 59 93 20 18
toffolo-materiaux@toffolo.fr
www.toffolo-materiaux.com

JOINT RULER TOFFOLO



- Hollow PVC profiles which absorb the expansion of concrete.
- Grooved lateral surface for perfect adherence of concrete.
- Large base for great stability.
- Hollow profile to allow the insertion of cables.
- The hard tip of the ruler is ideal as a guide while using the vibrating screed.



SETTING ON MOUNDS OR TOFFOBASES

Ground preparation :



Compacting the ground pitching and placing the welded wire mesh.



Setting of Joint-rulers :

Make mortar or concrete mounds the day before casting, every 60 or 70 cm approximately.



Level taken on the top of the joint-ruler.



The casting can occur the day after.

To facilitate and accelerate the setting of
our product
we propose the bearing
TOFFOBASE



Levels are taken on top of
steel rebars HA of 12 mm
which hold the
TOFFOBASE in place



The joint-ruler is clipped
on the TOFFOBASE



and is perfectly
maintained...



... the pouring



can start straight away.



Casting,



spreading



and finishing.



Special points :

**When 2 joint-rulers are crossing,
the perpendicular profiles
are cut at a 20° angle and**



the tips touch together.



To joint the profiles end to end,

a TOFFOBASE



**set in between the end of the profile is sufficient.
A left over steel bar can also be introduced to
allow the junction.**

For special application, you can also use :

THE JOINT-RULER 40 TO PLANT



It is also a dividing joint which is planted in fresh concrete.

The joint is pushed awash the pavement along the preset alignment. It is essentially used for roadwork and industrial paving.



TECHNICAL CARD :

	Modèle 80S Standart	Modèle 80R Re-enforced	Modèle 40S Standart	Modèle 40 to Plant	Toffobase 80	Toffobase 40
Length	5 m	5 m	3 m	2,50 m		
Height	8 cm	8 cm	4 cm	4 cm		
Weight/m	500 g	675 g	200 g	150 g	19 g	14 g
Colour	Yellow/White	Grey	White	Yellow	Black	Black
Use	12 to 30 cm slabs	12 to 30 cm slabs for heavy vibrating screed.	5 to 11 cm slabs	5 to 11 cm slabs	For TOFFOLO joint-ruler 80 Standard and Re-enforced. Use ratio = 1,5 pcs/ml	For TOFFOLO joint-ruler 40 Standard. Use ratio = 1,5 pcs/ml
Packaging	175 profiles of 5 m = 875 ml	175 profiles of 5 m = 875 ml	4 packets of 80 bars of 3 m = 4x240 = 960 ml	Box of 80 bars of 2,50 m = 200ml	Box of 500 pieces : 10 bags of 50	Box of 500 pieces : 10 bags of 50
Dimensions	5x1,20x0,50 h m	5x1,20x0,50 h m	3x0,80x0,50 h m	2,50x0,25x0,25 h m	54 x 35 x 35 cm	54 x 35 x 35 cm
Weight	450 kg	600 kg	200 kg	30 kg	9,7 kg	8 kg

SEE OUR WORKSITE REFERENCES ON : www.toffolo-materiaux.com

SETTING TRICKS :

- Mounds and/or steel rebars are placed **every 60 to 70 cm**.
- Do not set the profile directly on the ground, as it is essential to have concrete continuity at all times on the underneath part of the slab, this to avoid the risk of off setting effects.
- **LEVELLING** : Setting on the tracing line = finished level - height of the used profile (4 or 8 cm). steel rebars are then planted at the level of the tracing line. When a stake is pushed too far, it is **essential** to plant it again further !
- **CROSSING** :
 - on concrete mounds, it is essential to avoid setting concrete at the ends and crossings.
 - With the TOFFOBASE, a stake is planted on each side, and the closest to the crossing to secure the lot.

YOU CAN FIND TRICKS AND DETAILS OF SETTING ON : www.toffolo-materiaux.com

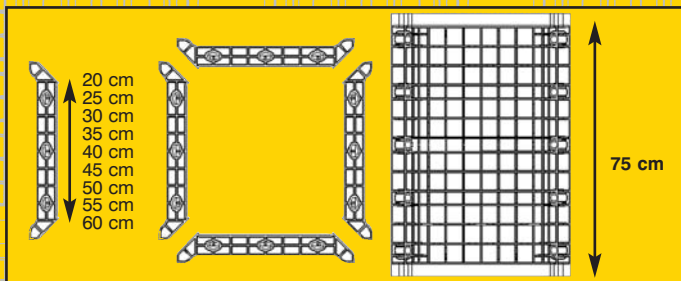
REUSABLE PVC FORMWORKS

• Round, square and rectangular posts :

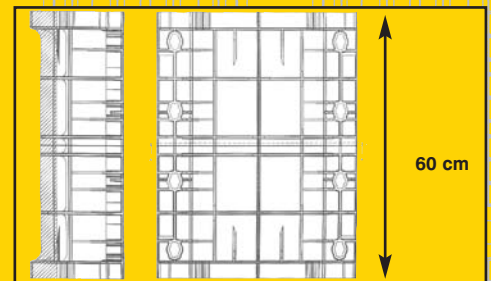
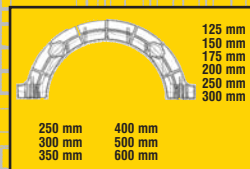
GÉOTUBE, QUADRO ET PANNELLO



- Elements of 60 or 75 cm.
- Made of ABS stable to UV.
- Easy and light use, practical handling and storage.
- Securing of the system by a 1/4 turn of a nylon handle.
- Simple vertical setting, stability and propping up.
- Use on all types of worksites.
- Ideal for rehabilitation work.
- No need for mould oil.
- For posts 3m high or more for small dimensions.



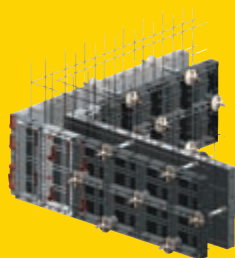
THESE FORMWORKS ARE REUSABLE 100 TIMES



Dimensions	20	25	30	35	40	45	50	55	60
Square	YES	YES	YES	YES	YES	YES	YES	YES	YES
Round	NO	YES	YES	YES	YES	NO	YES	NO	YES

Possibility to join all panels between each other to obtain rectangular formworks (45 possible combinations)

• Manually handled wall form : GÉOPANEL

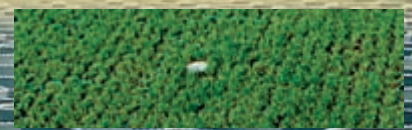
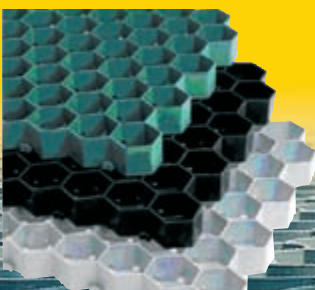


Light weight and modularity, ideal for small work and hard to get places.

ALL THESE FORMWORKS ARE REUSABLE 100 TIMES.

• Lawn slabs SALVAVERDE :

- Slab made of recycled PE HD which allows driving on its lawn or gravel driveway and facilitate the drainage of raining water.
- Fire department norm = 350 tons/square meter.
- Vertical fitting.
- Signal plugs available.

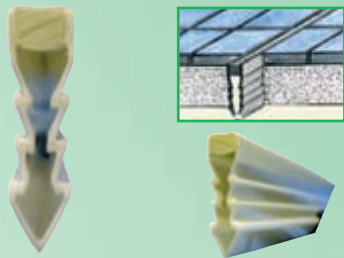


FOR MORE INFORMATION VISIT OUR WEB SITE : www.toffolo-materiaux.com

OUR OTHER PRODUCTS :

• Tiling products :

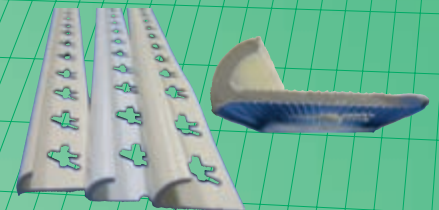
Dividing joint
30 and 50 mm
sealed setting (grey ou beige)



Dividing joint
10x8 and 14x8 mm
glued setting (grey)

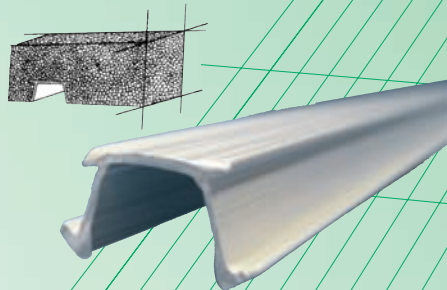


Angle rod for tiling
6 - 8 and 10 mm
(9 colours in stock)



• Windows, balcony and terrace's formwork :

Water drip profile
(15 mm)

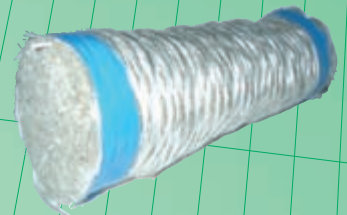
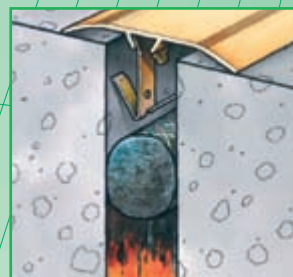
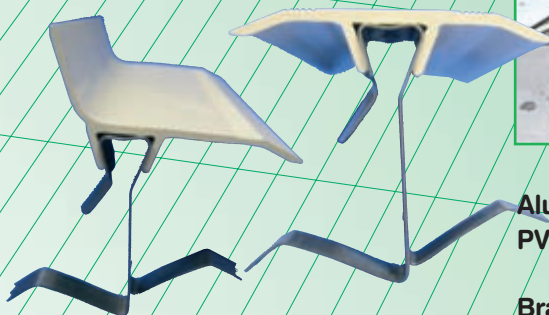


Edge formwork : "About de balcon"

Lost formwork including the water drip
(variable height : 7, 10, 12, 15, 17, 18, 20 cm)



• Joint covers, backup strip joint and fire-break rope 4 hours (Technical advice CSTB) :

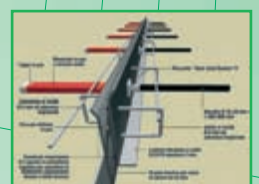
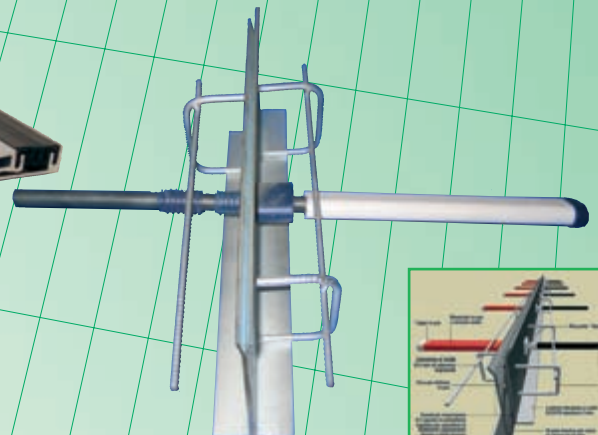


AVAILABLE HEIGHTS
Aluminium : 50 to 210 mm
PVC : 50 to 90 mm,
beige or white
Brass : on demand

Diameter from 12 to 150 mm
Mastic and glue available

• Expansion joints, construction joints and waterstop joints

for wall and floor adapted to every worksite depending on traffic and finish.
(Individual study and catalogue on demand)



VISIT OUR WEB SITE FOR MORE INFORMATION : www.toffolo-materiaux.com



TOFFOLO MATÉRIAUX

Quartier Arrauntz - 64480 USTARITZ - FRANCE

Tél. +33 (0)5 59 93 26 55

Fax +33 (0)5 59 93 20 18

toffolo-materiaux@toffolo.fr

www.toffolo-materiaux.com

OUR DISTRIBUTOR :