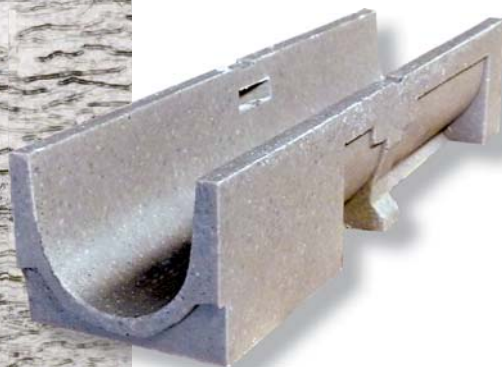
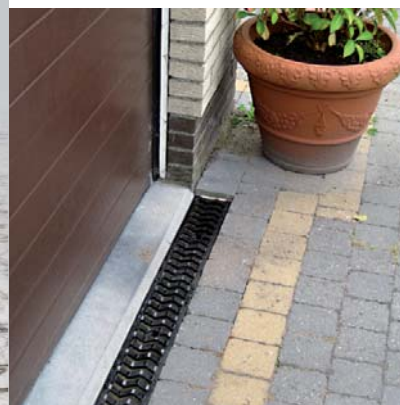


STORA-DRAIN[®]

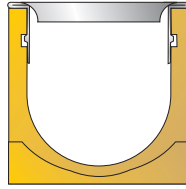
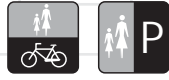
SELF type SB

The polyester concrete drainage channel for use around the house



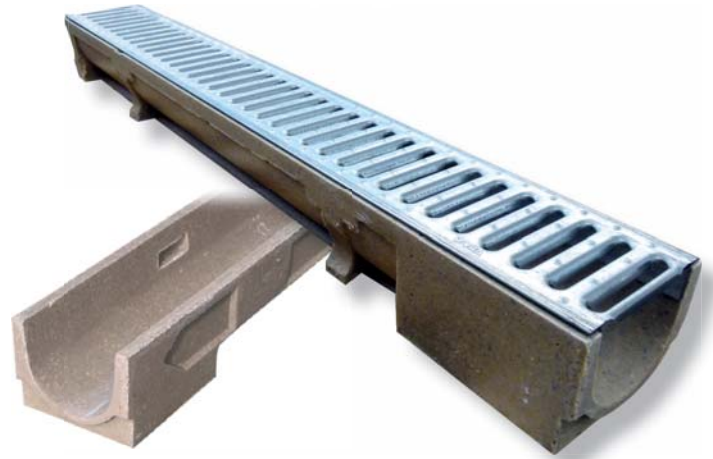
SELF

Class A15 - B125
SB100 - SB150 - SB200



The polyester concrete channels from the STORA-SELF range are the ideal solution for surface water drainage around private houses, garage doors, terraces and domestic driveways, due to their low weight and high strength. The channels are available in several widths and in 1m or 0,5m lengths. All channels are level invert and are connected by means of a tongue and groove jointing system. A wide range of overlay gratings is available with the system to suit a variety of applications.

The STORA-SELF channels type SB are suitable for loadings up to and including class B125.

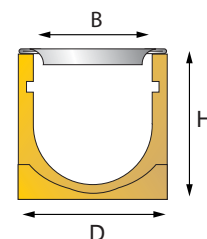
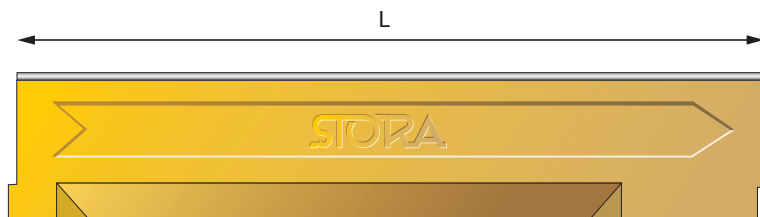


CHANNELS LEVEL INVERT



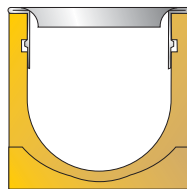
TYPE	L (m)	H (mm)	Weight (kg)	Vertical outlet on channel	Units per pallet (without grating)	Slotted grating galva	Slotted grating cast iron	Slotted grating cast iron zigzag	mesh grating galva
SB100 B=100 D=125	1	60	5,5	Ø110	120	☐	☐	☐	☐
SB100 B=100 D=125	1	80*	5,7	Ø110	100	☐	☐	☐	☐
SB100 B=100 D=125	1	100	7,3	Ø110	90	☐	☐	☐	☐
SB100 B=100 D=125	1	120	7,9	Ø110	100	☐	☐	☐	☐
SB100 B=100 D=125	1	160	9,0	Ø110	105	☐	☐	☐	☐
SB150 B=150 D=190	1	130	16,4	Ø160	45	☐	-	☐	☐
SB150 B=150 D=190	1	195	18,6	Ø160	45	☐	-	☐	☐
SB200 B=200 D=240	1	130	19,9	Ø200	35	-	-	☐	☐
SB200 B=200 D=240	1	240	25,1	Ø200	35	-	-	☐	☐
SB100 B=100 D=125	0,5	100	4,6	Ø110	-	☐	☐	☐	☐
SB150 B=150 D=190	0,5	195	15,2	390x125	-	☐	-	☐	☐
SB200 B=200 D=240	0,5	240	17,8	390x125	-	-	-	☐	☐

*Height 80 mm = no possibility to anchor



SELF

Class A15 - B125
SB100 - SB150 - SB200



GRATINGS FOR SELF - TYPE SB

(Colour and finishing of the gratings may vary from the images.)

For channel SB100



Grating type	Material	Slots/Meshes	Class	Length (m)	Weight (kg)	Art. N°
Slotted grating FIX-locking	Galvanised	10 mm	A15	1	1,5	S4211101
				0,5	0,8	S4211050



FIX system = integrated locking with 'bumps'



Slotted grating FIX-locking	Galvanised	6 mm	A15	1	1,5	S4211201
				0,5	0,8	S4211150



FIX system = integrated locking with 'bumps'



Slotted grating FIX-locking	Stainless steel	10 mm	A15	1	1,5	S4211102
				0,5	0,8	S4211051



FIX system = integrated locking with 'bumps'



Slotted grating Anchorage type IV	Stainless steel	6 mm	A15	1	1,5	S4200110
				0,5	0,8	S4200115



Slotted grating Anchorage type I or IV	Copper	10 mm	A15	1	2,3	S4200106
				0,5	1,1	S4200056



Slotted grating Anchorage type I or IV	Brass	10 mm	A15	1	2,2	S4200107
				0,5	1,1	S4200057



Slotted grating Anchorage type I	Cast iron *	17 mm	B125	0,5	2,8	S4200250
-------------------------------------	-------------	-------	------	-----	-----	----------

(*) Keep in mind thickness 5 mm of grating for installation purposes.



Slotted grating zigzag Anchorage type I	Cast iron *	18 mm	B125	0,5	2,4	S4200255
---	-------------	-------	------	-----	-----	----------

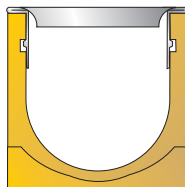
(*) Keep in mind thickness 8 mm of grating for installation purposes.



Mesh grating Anchorage type I	Galvanised	33x22 mm	B125	1	3,0	S4200004
				0,5	1,5	S4200005

SELF

Class A15 - B125
SB100 - SB150 - SB200



For channel SB150



Grating type	Material	Slots/ Meshes	Class	Length (m)	Weight (kg)	Art. N°
Slotted grating Anchorage type I	Galvanised	10 mm	A15	1	2,8	S4300103
				0,5	1,4	S4300053



Slotted grating zigzag Anchorage type I	Cast iron *	18 mm	B125	0,5	4,0	S4300255
---	-------------	-------	------	-----	-----	----------

(*) Keep in mind thickness 10 mm of grating for installation purposes.



Mesh grating Anchorage type I	Galvanised	33x33 mm	B125	1	4,3	S4300004
				0,5	2,2	S4300005

For channel SB200



Grating type	Material	Slots/ Meshes	Class	Length (m)	Weight (kg)	Art. N°
Slotted grating zigzag Anchorage type I	Cast iron *	18 mm	B125	0,5	5,1	S4400255

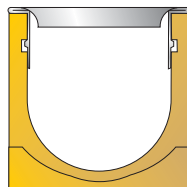
(*) Keep in mind thickness 12 mm of grating for installation purposes.



Mesh grating Anchorage type I	Galvanised	33 x 33 mm	A15	1	5,8	S4400004
				0,5	2,9	S4400005

SELF

Class A15 - B125
SB100 - SB150 - SB200



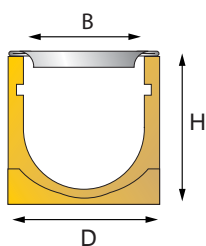
ANCHORAGES

Anchorage type	Material	Anchorage	for channel type	Weight (kg)	Art. N°
I For slotted grating, mesh grating and cast iron grating	Galvanised	M8 x 40	SB100	0,1	S5000002
		M8 x 70	SB150	0,2	S5100002
			SB200	0,2	S5200002
IV For slotted grating in stainless steel, copper and brass	Stainless steel	M8 x 40	SB100	0,1	S5000045
		M8 x 70	SB150	0,2	S5100045
			SB200	0,2	S5200045

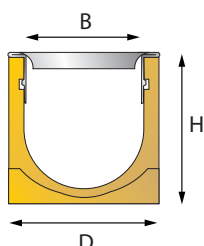
*Height 80 mm = no possibility to anchor

OVERVIEW LOCKING SYSTEMS

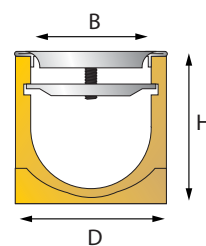
Onlaying grating not anchored



Grating with integrated FIX-locking



Grating anchored in the channel

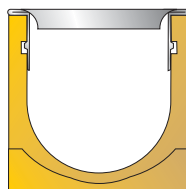


Anchorage type I / IV
galvanised / stainless steel



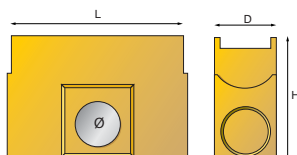
SELF

Class A15 - B125
SB100 - SB150 - SB200



SUMP UNIT

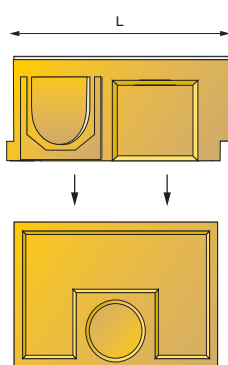
SB100



Sump unit including galvanised bucket

TYPE	L (m)	H (mm)	Weight (kg)	Art.N°	Outlets
SB100	0,5	285	12,0	S4000002	Ø110

SB150



Channel with rectangular vertical outlet

TYPE	L (m)	H (mm)	Weight (kg)	Art.N°	Outlets
SB150	0,5	195	15,2	S4300012	390x125

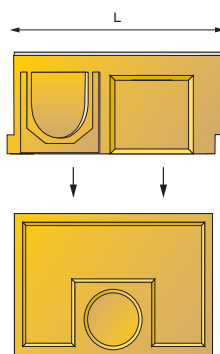
Gully

TYPE	L (m)	H (mm)	Weight (kg)	Art.N°	Outlets
SB150	0,5	350	22,5	S3000153	Ø110/Ø160/Ø200
SB150	0,5	700	34,1	S3000154	Ø110/Ø160/Ø200

Bucket

TYPE	L (m)	H (mm)	Weight (kg)	Art.N°	Outlets
SB150	-	350	2,8	S7000003	-
SB150	-	600	3,6	S7000004	-

SB200



Channel with rectangular vertical outlet

TYPE	L (m)	H (mm)	Weight (kg)	Art.N°	Outlets
SB200	0,5	240	17,8	S4400012	390x125

Gully

TYPE	L (m)	H (mm)	Weight (kg)	Art.N°	Outlets
SB200	0,5	350	22,5	S3000153	Ø110/Ø160/Ø200
SB200	0,5	700	34,1	S3000154	Ø110/Ø160/Ø200

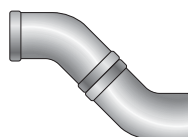
Bucket

TYPE	L (m)	H (mm)	Weight (kg)	Art.N°	Outlets
SB200	-	350	2,8	S7000003	-
SB200	-	600	3,6	S7000004	-

Foul-air trap



S7000010



S7000005
S7000006
S7000007

Dia.	For sump unit	Weight (kg)	Art.N°
Ø110	SB100	0,1	S7000010
Ø110	SB150, SB200	1,0	S7000005
Ø160	SB150, SB200	3,2	S7000006
Ø200	SB150, SB200	4,0	S7000007

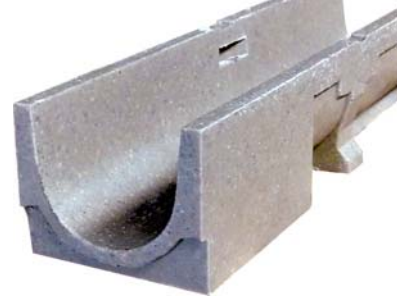
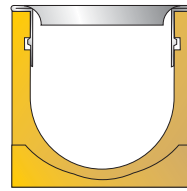
Foul-air trap with leaf catcher



Dia.	for channel	Weight (kg)	Art.N°
Ø110	fits in every channel SB100	0,3	S6000003

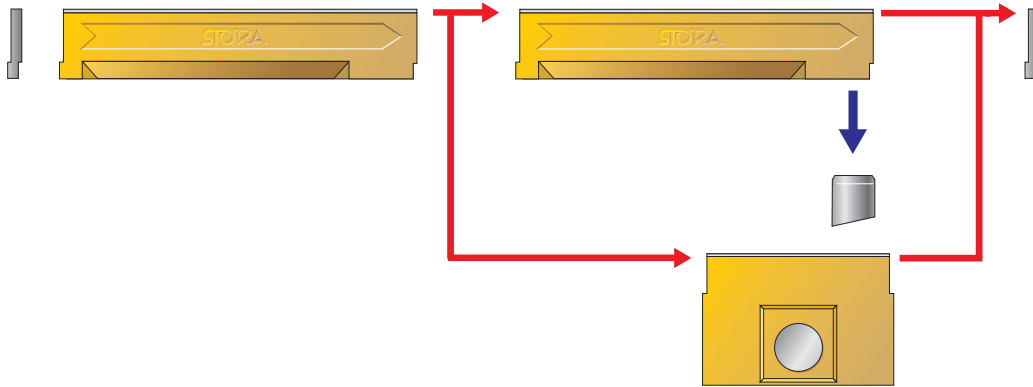
SELF

Class A15 - B125
SB100 - SB150 - SB200

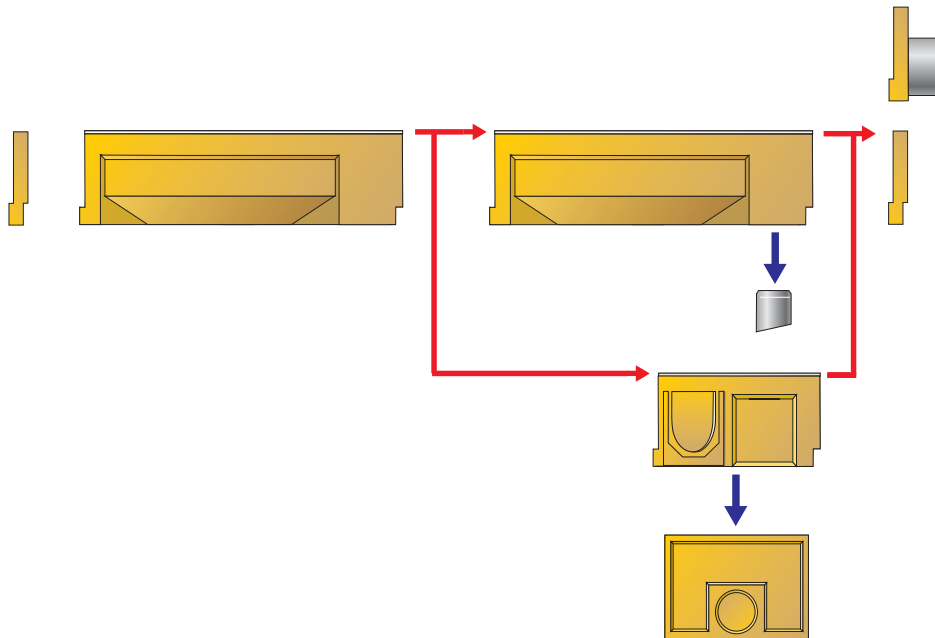


HOW DO YOU MAKE UP A CHANNEL RUN ?

SB100



SB150/200



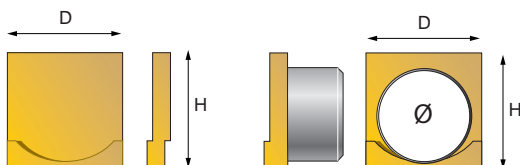
ENDCAPS (with or without outlet)



S4110012

System SB100: PE

System SB150/200: Polyester concrete

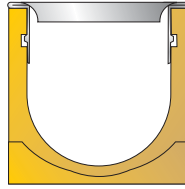


for channel TYPE	N°	Height (mm)	Weight (kg)	Art.N°	Integrated Outlet
SB100	-	60	0,1	S4110015*	-
SB100	-	80	0,1	S4110016*	Ø50
SB100	-	100	0,1	S4110012*	Ø50/70/80
SB100	-	120	0,1	S4110013*	Ø50/70/80
SB100	-	160	0,1	S4110014*	Ø50/70/80
SB150	-	195	2,4	S4300002	-
SB150	-	195	2,3	S4300003	Ø110
SB200	-	240	3,7	S4400002	-
SB200	-	240	3,0	S4400003	Ø160

(*endcap in PE)

SELF

Class A15 - B125
SB100 - SB150 - SB200



SPECIFICATIONS (BASIC TEXT WITH OPTIONS) SELF - TYPE SB

Width 100

- channel in polyester concrete level invert
- height of the channels: 60 - 80 - 100 - 120 - 160 mm

Options STORA-SELF W100:

- sump unit
 - with bucket in galvanised steel
 - with or without foul-air trap (dia. Ø110)
- gratings: - slotted grating in:
 - galvanised steel class A15 (with integrated FIX-locking) - 10mm slot
 - galvanised steel class A15 (with integrated FIX-locking) - 6mm slot
 - stainless steel class A15 - 10mm slot
 - stainless steel class A15 - 6mm slot
 - copper class A15
 - brass class A15
 - ductile iron class B125
- mesh grating in galvanised steel class B125
- anchorages: "FIX"system or anchorage type I or IV

Width 150 and 200

- channel in polyester concrete level invert

Options STORA-SELF W150 and W200:

- four-way junction with rectangular vertical outlet and gully, height 350mm or 700mm:
 - with bucket in galvanised steel
 - with or without foul-air trap (dia. Ø110, Ø160 or Ø200)
- slotted grating in galvanised steel class A15 (width 150)
- mesh grating in galvanised steel class B125 (width 150) and class A15 (width 200)
- ductile iron slotted grating class B125
- anchorage type I or IV



STORA-DRAIN



IMCOMA S.A.

Zwaarveld 32

(B) 9220 Hamme

Tel.: +32 52 49 98 99

Fax: +32 52 47 07 76

E-mail: info@imcoma.com

www.stora-drain.be