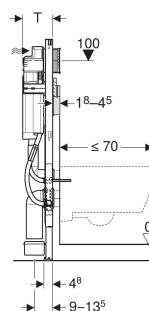
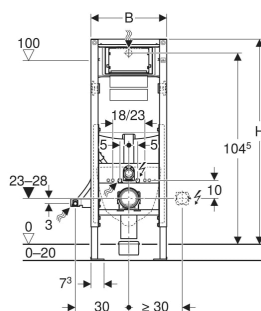


Geberit Duofix frame for wall-hung WC, 112 cm, with Sigma concealed cistern 12 cm, less-abled installation



APPLICATION PURPOSES

- For drywall construction
- For installation in part or room-height prewall installations
- For installation in room-height installation walls
- For installation in part or room-height Geberit Duofix system walls
- Suitable for less-abled installation
- For wall-hung WCs with connection dimensions in accordance with EN 33:2011
- For wall-hung WCs with projection up to 70 cm
- For floor constructions 0–20 cm

CHARACTERISTICS

- Statically self-supporting frame, protected against corrosion with powder coating
- Frame prepared for support brackets for WC ceramic appliances with small contact surfaces
- Frame width reduced for placement of support handles next to the element
- Adjustable installation height of WC during the installation phase, 41–46 cm
- Galvanized feet
- Feet adjustable 0–20 cm
- Non-slip leg supports

- Rotatable foot plates
- Foot plate depth suitable for installation in U-profiles UW 50 and UW75 and Geberit Duofix system rails
- Connection bend can be mounted without tools at different depths, adjustable range 45 mm
- Fastening for connection bend, sound-absorbing
- Concealed cistern with front actuation
- Concealed cistern, fully insulated against condensation
- Cistern fulfils standard requirements in accordance with EN 14055, Class II
- Immediate post flush possible with factory setting
- Tool-free installation and maintenance work on concealed cistern
- Water supply connection on the rear or top centre
- Protection cover box for service opening protects against moisture and dirt
- Protection box for service opening can be cut to length
- With conduit pipe for feed pipe for Geberit AquaClean shower toilets and for connection cable
- Fastening option for electrical connection
- Power & Connect Box mountable

TECHNICAL DATA

Flow pressure 0.1–10 bar

Operating temperature, water max. 25 °C
 Flush volume, factory setting 5.8 / 3 l
 Flush volume small, adjustment 2–4 l range

SCOPE OF DELIVERY

- Water supply connection R 1/2", compatible with MasterFix and MeplaFix, with integrated angle stop valve and hand wheel
- Protection box for service opening
- Connection set for WC, ø 90 mm
- Connection bend 90° made of PE-HD, ø 90 mm
- Adaptor socket made of PE-HD, ø 90 / 110 mm
- 2 protection plugs
- 2 threaded rods M12
- Fastening material

ACCESSORIES

- Geberit Power & Connect box
- Geberit set of Power & Connect box and power supply unit for element for wall-hung WC
- Geberit set of support brackets for WC ceramic appliances with small contact surfaces
- Geberit Duofix set of wall anchors for single installation

- Geberit Duofix set of wall anchors for single and system installation
- Geberit Duofix fastening material for stud clearance 50–57.5 cm

INFO

- When using the Power & Connect box, it is not possible to combine an electronic WC flush control with Geberit AquaClean

- Without wall fixings
- Elongated (750 mm) bowls are allowed on 111.352.00.5. This frame was designed for 70 cm, however 75cm projection is with in tolerance.
- Any boarding must be fixed tight up against the face of the Duofix frame and screwed directly to the frame

- The cistern can be operated with used water (rainwater) provided it is passed through a filter system first
- Flush valve features settings to enable either a 6 l and 3 l flush or a 4.5 l and 3 l flush. Note: must be used with pans designed for low volume flush

<i>Art. no.</i>	<i>B</i> cm	<i>H</i> cm	<i>T</i> cm
111.352.00.5 Phasing out	42.5	112	17