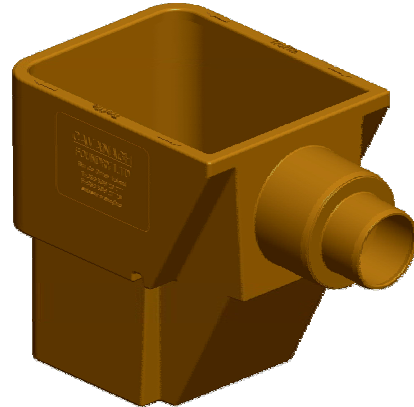


RG04 - 20 Litre Shallow Road Gully

Technical Specification

Description:

JFC's 20 litre shallow road gully is rotationally moulded in medium density polyethylene with a top opening of 390mm X 315mm. The gully is used where conventional deeper gullies are not suitable. The gully incorporates an integral trap in the form of a flat plate. When the plate is in place the gully is considered as trapped and once removed it is untrapped. Outlet spigot or socket connection is suitable for 100 mm and 150mm single wall pipe.



Design Data:

General:

JFC Gullies are satisfactory for use when surrounded with a minimum of 150 mm of concrete as specified by MCDHW (Manual of Contract Documents for Highway Works) Volume 3. See Installation instructions overleaf.

Dimensions:

Nominal top opening of 390mm X 315mm and a depth of 390mm. Trap depth is nominal 70mm. Outlet spigot will take a 150 mm JFC CorriPipe.

Flow Characteristics:

Gully has flow characteristics equivalent or better to those of pre-cast concrete units. Gully has a holding capacity of 20 litres.

Strength and Stability:

Gullies have adequate strength to withstand loads associated with placing the concrete.

Gullies have adequate resistance to impacts likely to be encountered during transportation, installation and emptying.



Installation Instructions:

1. Excavate a suitable hole for the road gully, allowing for a minimum surround of 150 mm concrete.
2. A concrete base of 150 mm in depth is required.
3. The gully should be leveled in line with the branched drain.
4. Connect the gully to the branch drain.
5. The gully should be surrounded to the top with 150 mm of concrete. To prevent **distortion** and **flotation**, the gully should be **filled** with water or suitable ballast **prior** to filling concrete surround. Concrete should be evenly distributed and must fully surround the outlet spigot and connection joint; the use of a vibrating poker will assist compaction and reduce void formation.