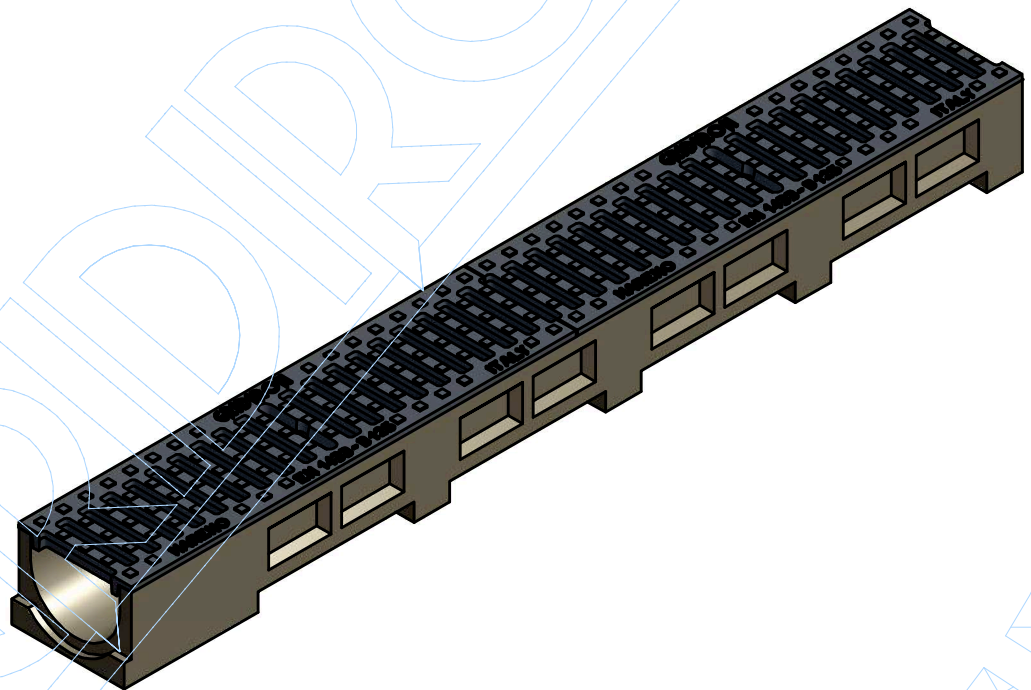
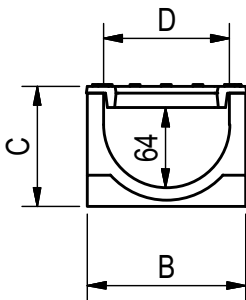


# TECHNICAL SHEET



ASSEMBLED CODE	4505SGGJ
	CHANNEL mod. BASE 100 in polymer concrete, c/w nr. 2 grids in G25 cast-iron with slots of 8mm, assembled and locked. Loading Class B125
----- CHANNEL -----	4505S
TYPE	Drainage Channel "M" Type
MATERIAL	Polymer Concrete
LOADING CLASS	Class C250
NORM	UNI EN 1433:2008
WATER FLOW Lt/Sec.	0,5%=4,1 - 1%=5,8 - 1,5%=7,1 - 2%=8,3 - 3%=10,1
----- COVERS -----	4505GGJ
TYPE	Cast-Iron Grid
MATERIAL	Cast-iron G25
LOADING CLASS	Class B125
NORM	UNI EN 1433:2008
SLOT SIZE	8 mm x 80 mm



A	B	C	D	E	F
LENGHT MM	WIDTH MM	HEIGHT MM	INNER WIDTH MM	RUNOFF SECTION Sq-CM	WEIGHT KG
1000	127	96	100	48	13,50

All channels, to reach the given loading class, must be installed on site as for our installation instructions.